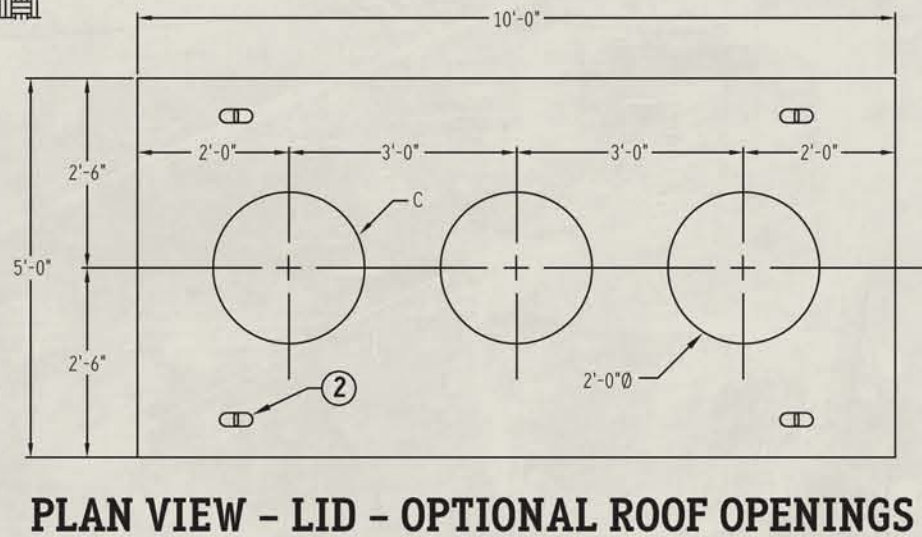
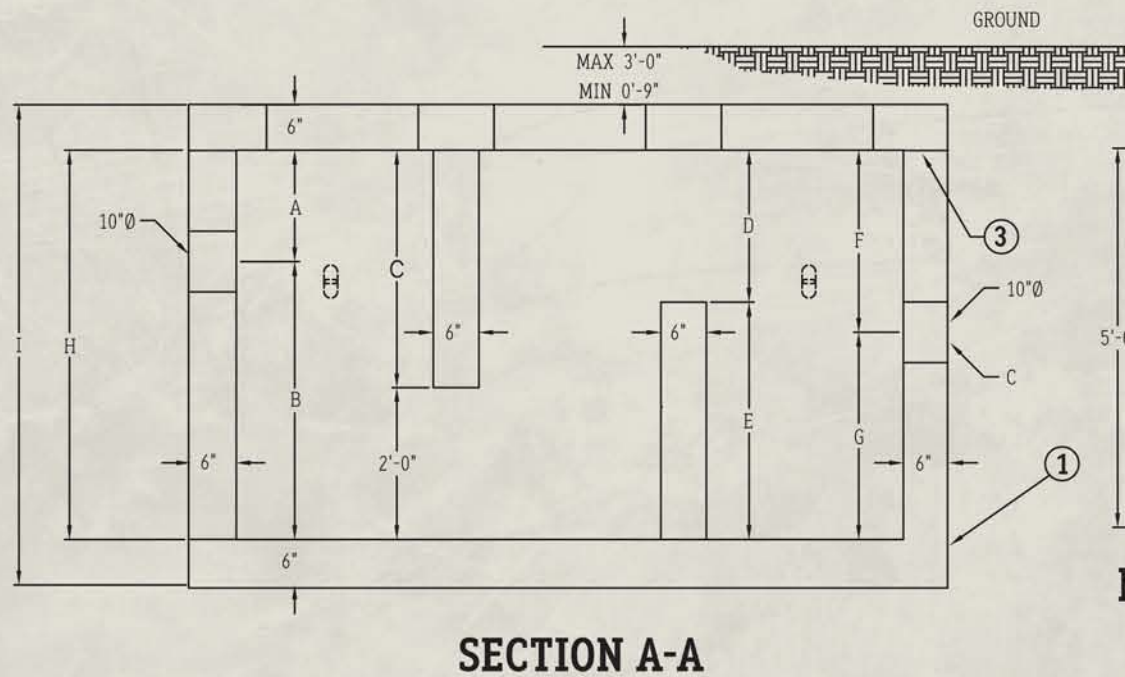
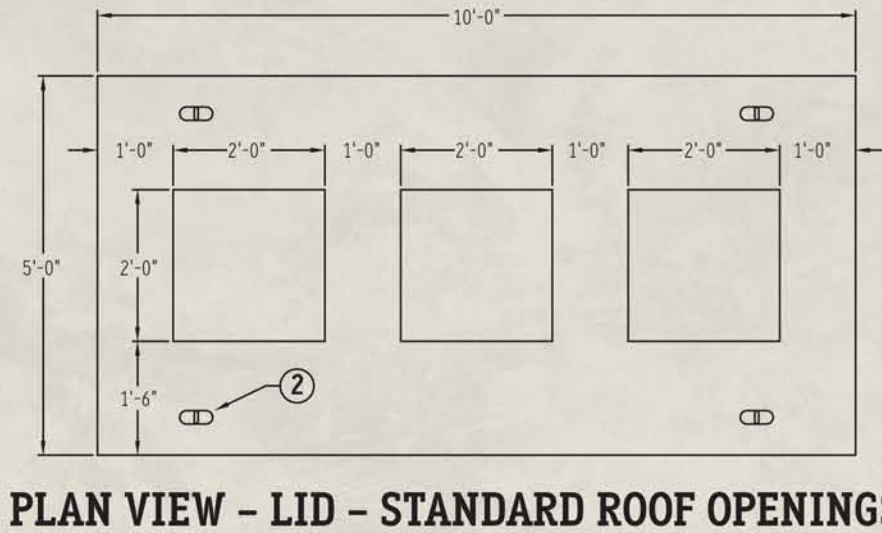
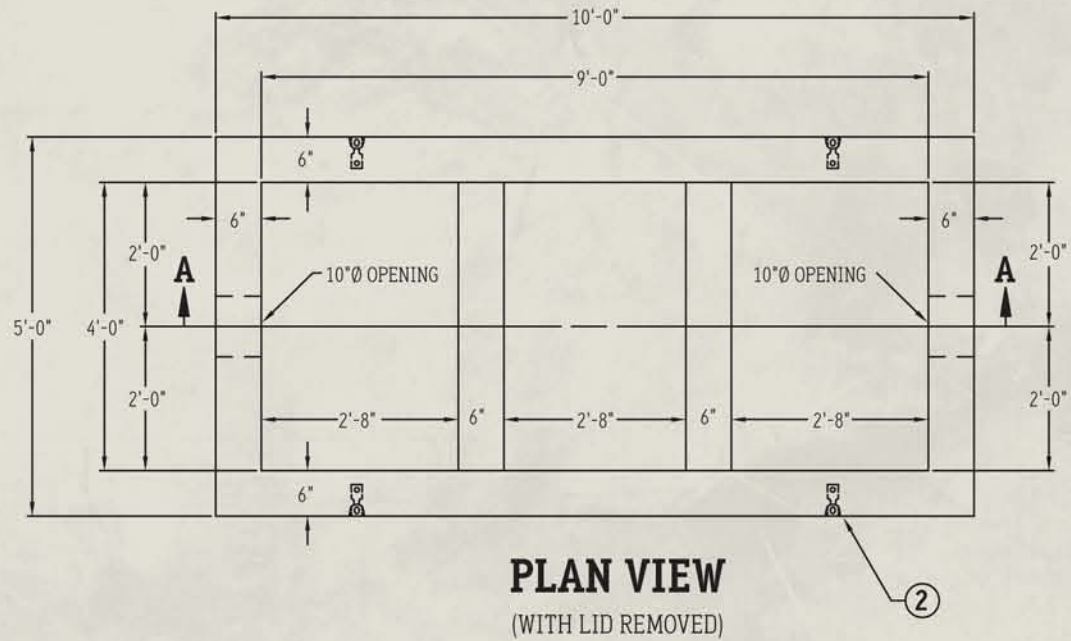


ITEM NO	DESCRIPTION
GT945S	9'-0" x 4'-0" x 5'-0" WITH SQUARE ROOF OPENING
GT946S	9'-0" x 4'-0" x 6'-0" WITH SQUARE ROOF OPENING
GT947S	9'-0" x 4'-0" x 7'-0" WITH SQUARE ROOF OPENING
GT945R	9'-0" x 4'-0" x 5'-0" WITH ROUND ROOF OPENING
GT946R	9'-0" x 4'-0" x 6'-0" WITH ROUND ROOF OPENING
GT947R	9'-0" x 4'-0" x 7'-0" WITH ROUND ROOF OPENING



**BILL OF MATERIALS**

Item	Description	Quantity
1	PRECAST CONCRETE	1
2	4T LIFTING ANCHORS	8
3	1" BUTYL RUBBER JOINT SEALANT (SEE NOTE "B" BELOW)	2 ROLLS

**SPECIFICATIONS**

- CONCRETE:** 5,000 psi @ 28 DAYS  
5%-8% ENTRAINED AIR
- REBAR:** ASTM A-615 GRADE 60
- DESIGN CRITERIA:**
- A) CITY OF CHICAGO CONFIGURATION**
  - B) LOADING PER ASTM C857, INCLUDING:**
    - EARTH COVER: MIN 0'-9" MAX 3'-0"
    - AASHTO HS-20 WHEEL LOAD & APPLICABLE IMPACT
    - VERTICAL & LATERAL SOIL PRESSURES DETERMINED USING 120 PCF SOIL DENSITY
    - GROUNDWATER AT 3'-0" BELOW GRADE
  - C) STRUCTURAL DESIGN PERFORMED USING AASHTO STRENGTH DESIGN**
  - D) REINFORCING COVER PER ACI 318**

- NOTES:**
- A) CONTACT UCP FOR CUSTOM CONFIGURATIONS OR MODIFICATIONS**
  - B) UCP SUGGESTS THAT 1 1/2" OF NON-SHRINK MORTAR SHOULD BE PLACED AT THE BASE/LID JOINT BY THE INSTALLING CONTRACTOR**
  - C) OPENINGS ARE STEEL FORMED SMOOTH SURFACES TO ACCOMMODATE BOOTS**

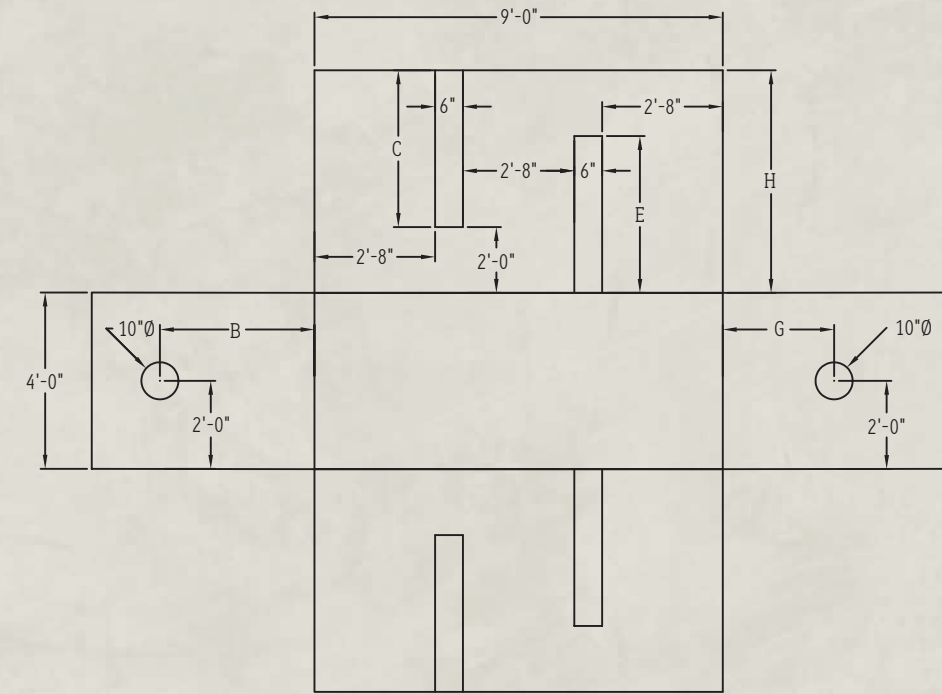
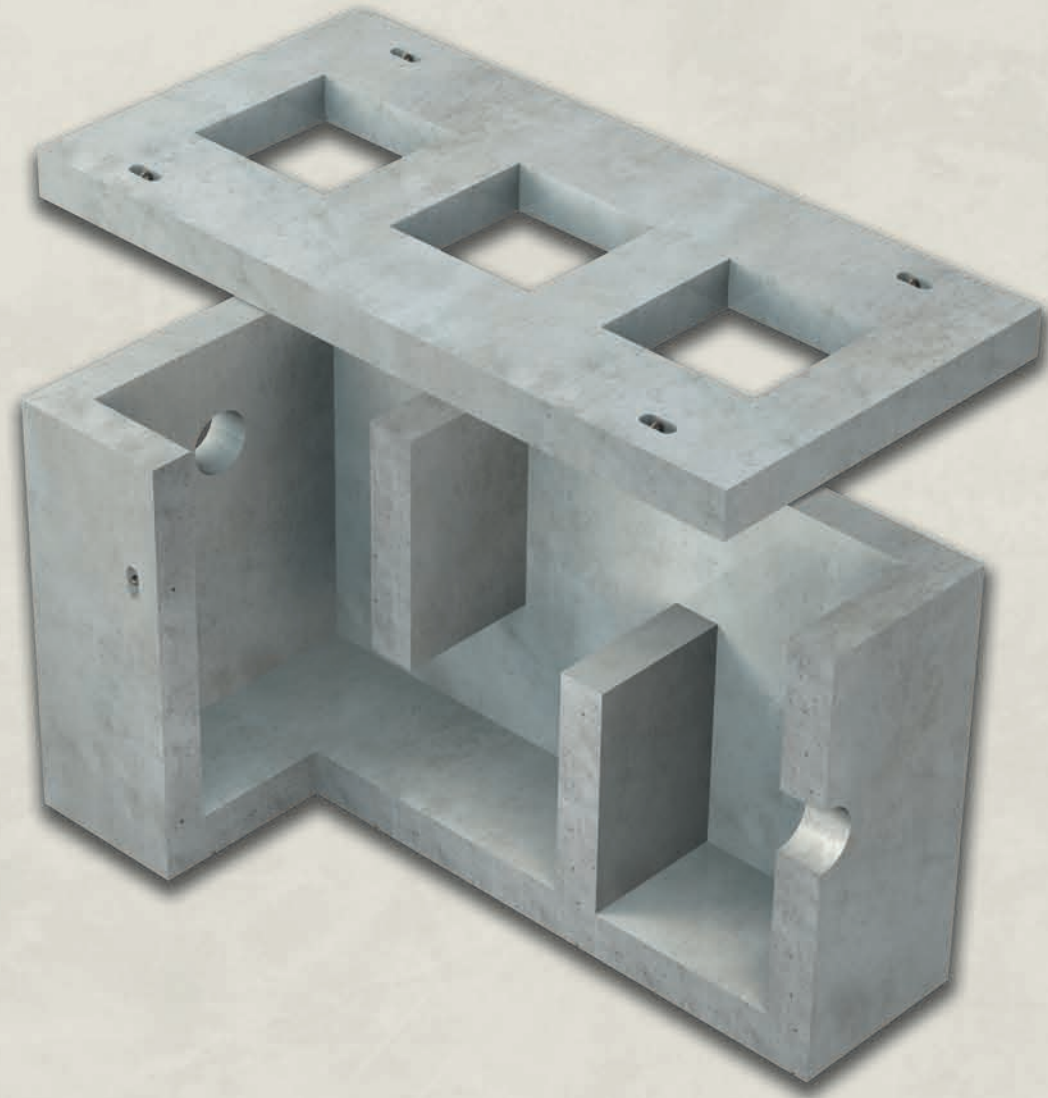
SEE REVERSE SIDE FOR FOLDOUT DRAWING

GREASE TRAP INTERIOR DIMENSIONS	DIMENSIONS									WEIGHT		
	A	B	C	D	E	F	G	H	I	BASE	LID W/SQUARE OPENING	LID W/ROUND OPENING
9'-0" x 4'-0" x 5'-0"	1'-6"	3'-6"	3'-0"	2'-0"	3'-0"	2'-6"	2'-6"	5'-0"	6'-0"	16,518#	2,850#	3,050#
9'-0" x 4'-0" x 6'-0"	2'-0"	4'-0"	4'-0"	2'-6"	3'-6"	3'-0"	3'-0"	6'-0"	7'-0"	18,768#	2,850#	3,050#
9'-0" x 4'-0" x 7'-0"	2'-6"	4'-6"	5'-0"	3'-0"	4'-0"	3'-6"	3'-6"	7'-0"	8'-0"	21,318#	2,850#	3,050#



**GREASE TRAP**  
BASE AND LID ASSEMBLY

*Get the Precast Advantage!*



**FOLDOUT DRAWING**

**NOTES**

---



---



---



---



---



---



---



---